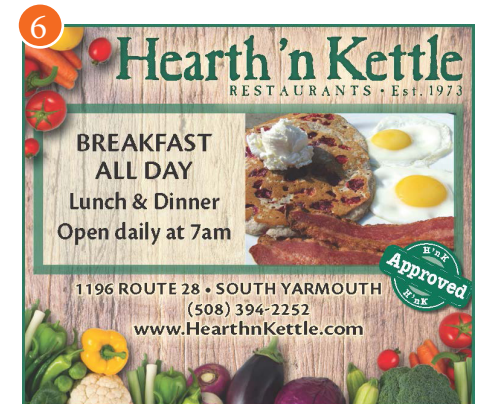


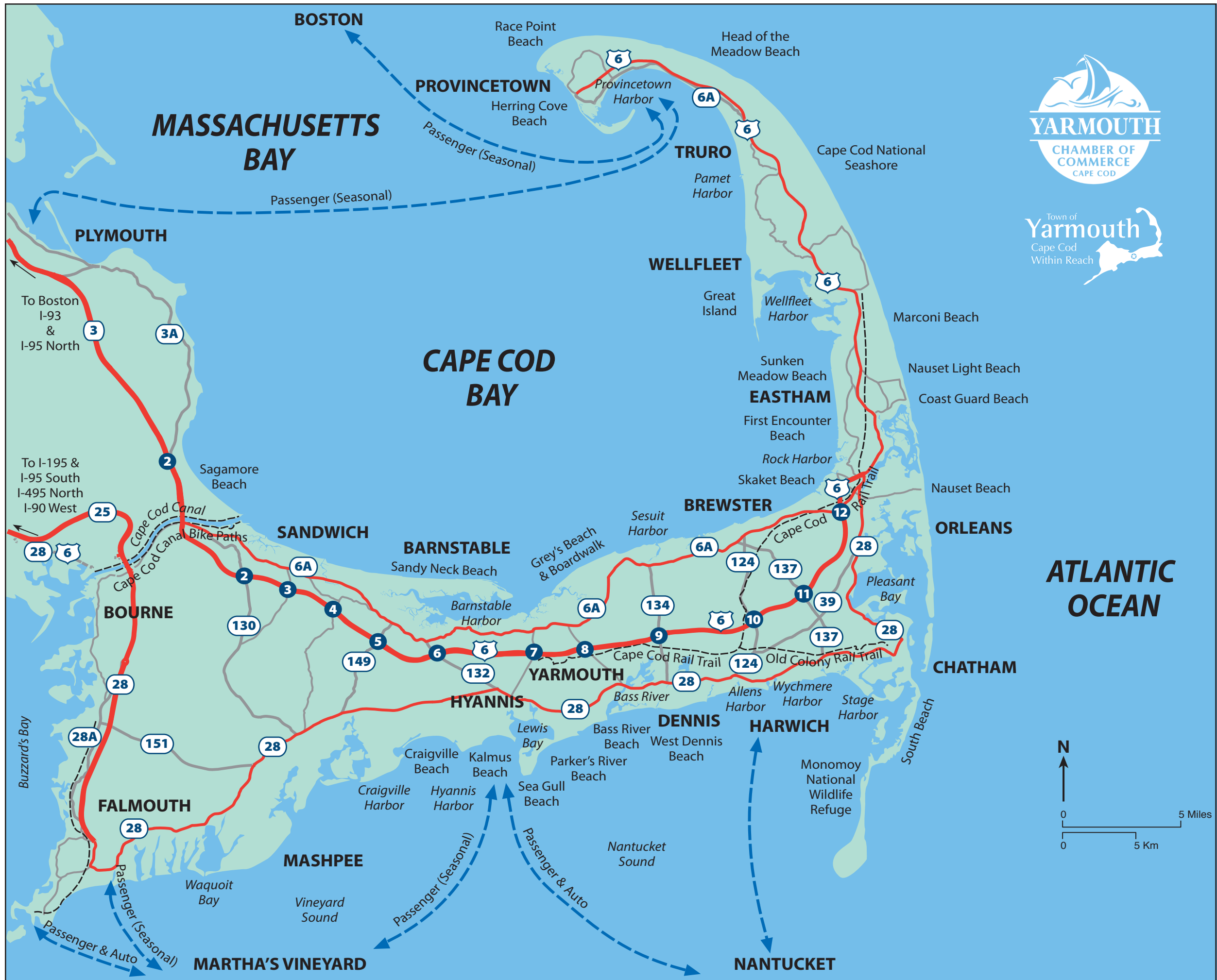


1. Aiden by Best Western at Cape Point
2. Bass River Golf Course
3. Candy Co.
4. The Cove at Yarmouth
5. Dunkin' Donuts, Station Ave.
6. Hearth 'n Kettle Restaurant
7. John G. Sears and Son Inc.
8. Just Picked Gifts
9. Kinlin Grover Real Estate
10. Route 28 Visitor Center
11. Salty's
12. Seafood Sam's
13. Strawberry Ln. (Route 6A)
14. Taylor Bray Farm
15. Today Real Estate
16. Wendy's
17. Yarmouth Town Hall



2020 YARMOUTH SAND SCULPTURE TRAIL





HOW TO ENTER THE CONTEST:

There will be one photo contest entry accepted per person. This can include up to 3 photos in up to 3 categories, 1 photo for each category. However, you must send your entry in 1 email, with all photo entries submitted together.

Prizes of gift certificates to local businesses will be awarded for photos in 3 categories: Most Creative Photo, Sand Sculpture Selfie, and Best Location Photo.

Most Creative: Use your imagination and creativity and come up with a really unique photo.

Sand Sculpture Selfie: Take a selfie alone, or with your friends, family or loved ones showing how much fun you're having on the trail!

Best Location Photo: Take a great photo of the sand sculpture at any location and be sure to include the business that's sponsoring the sand sculpture in the photo.

FOLLOW THESE CONTEST GUIDELINES TO QUALIFY:

STAND BACK! Don't get too close to or touch the sand sculptures when you take your photos. Photos taken 'inside the roped off area' or touching the sand sculptures will be disqualified.

VISIT the Contest Facebook page: You can find the contest Facebook page by typing in Yarmouth Sand Sculpture Trail Photo Contest 2020 in the search bar on Facebook.

LIKE and SHARE the page: Share the fun of the Yarmouth Sand Sculpture Trail Photo Contest by clicking LIKE on the page and sharing the page with your family and friends.

HOW TO SUBMIT YOUR ENTRY:

CLICK the SEND EMAIL button to submit your entry: The blue SEND EMAIL button is located on the top right of the Facebook page. Click the button and submit your entry by email.

What information we need in your email for your entry to be complete:

1. Your first and last name.
2. Where you're from.
3. Where you were when you took the photo (include the name of the business where the sand sculpture is located).
4. Category of each photo (Most Creative Photo, Sand Sculpture Selfie, or Best Location Photo).
5. The date you took the photo.
6. Attach your photo to the email using the paper clip symbol at the top of the email toolbar. Note: Your photo should be submitted as high-resolution (300 dpi) image suitable for print and web use.

The entry deadline is Monday, September 7th by 6:00 PM. No entries will be accepted after that time.

The Yarmouth Chamber of Commerce reserves the right to exclude any photo entry from publication on the contest Facebook page if it does not follow the contest guidelines, or is not deemed appropriate for viewing by children, families, and the general public.

The Chamber also reserves the right to use any photo submitted to the contest for promotional purposes, including but not limited to posting on the Chamber's contest websites, on social media, and in public relations about the event.

This project is partially funded by the Town of Yarmouth's Tourism Revenue Preservation Fund.